

SAFI AERIAL PLATFORMS

SCA 24

Articulated aerial platform



ALTEZZA MASSIMA	WORKING HEIGHT	HAUTER DE TRAVAIL	ARBEITSHOHE	24 M
SBRACCIO MASSIMO	WORKING OUTREACH	DEPORT MAXI	MAXIMALE REICHWEITE	13,30 M / 120 KG 10,50 M / 220 KG
PORTATA MASSIMA	SWL	CHARGE EN NACELLE	TRAGFAHIGKEIT	220 KG
PIAZZAMENTO	JACKING WIDTH	PLACEMENT	STUTZEN BREITE	3200 MM
ROTAZIONE TORRETTA	TURRET ROTATION	ROTATION DE LA TURELLE	SCHWENKBEREIT	360°+40°
ROTAZIONE CESTA	CAGE ROTATION	ROTATION DE LA NACELLE	DREHBEREICH	55°+55°
DIMENSIONI I CESTA	CAGE DIMENSIONS	DIMENSION MAXI NACELLE	ARBEITSKORBABMESSUNGEN	1400x700x1100 MM
ALLESTIMENTO MINIMO SU	GVW	PTAC	GESAMTGEWICHT	3,5 TON

- ENGINE START / STOP CONTROLS FROM CAGE AND GROUND. JACKING CONTROLS ON GROUND
- EMERGENCY MANOEUVRES FROM GROUND. EMERGENCY HAND PUMP.
- BLOCKING VALVES ON LEGS. SAFETY INTERLOCK BETWEEN LEGS AND BOOM.
- CABIN ELECTRICAL PROTECTION DEVICE (ANTI - COLLISION) HOUR COUNTER
- NON-SLIP ALUMINUM STEEL FLOOR. CAGE ACCESS STAIR. REAR WHEELS MUD-FLAP.
- STRUCTURE MADE OF COLD-ROLLED ULTRA HIGH-STRENGTH FINE GRAINED STEEL
- AUTOMATIC OR MANUAL JACKING
- SAFI ELECTROHYDRAULIC PROPORTIONAL BY **MOBA** WITH MPC (MULTI PURPOSE CONTROLLER)
- OUTREACH CONTROL
- ELECTROHYDRAULIC CONTROLS IN CAGE , WITH OPTION FOR MORE SIMULTANEOUS MOVEMENTS

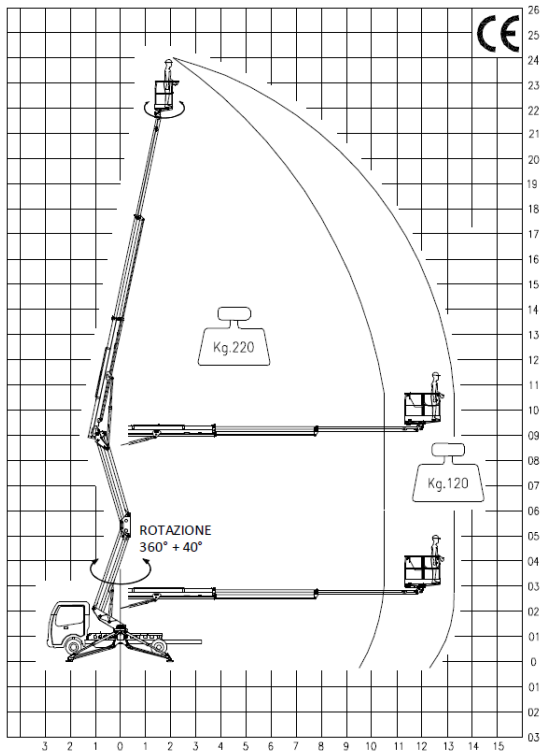
SAFIS.r.l.

Sede legale: Via San Rocco, 8 - 31041 Cornuda (TV) - Italy / Sede operativa: Via L. Da Vinci, 3 - 35048 Stanghella (PD) - Italy

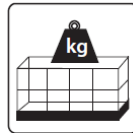
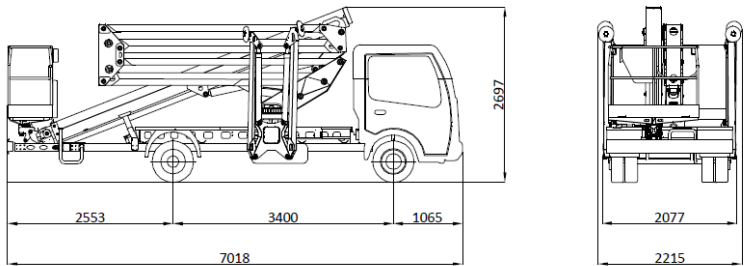
Tel.: +39 0425 95792 - Fax: +39 0425 958602 commerciale@safiaerialplatforms.com www.safiaerialplatforms.com

SAFI AERIAL PLATFORMS

WORKING AREA



GENERAL ASSEMBLY ON NISSAN CABSTAR 35.12 WHEELBASE 3400 MM



SWL / PORTATA MASSIMA / CHARGE EN NACELLE / KORBLAST :

220 Kg



GVW/ PTT/ PTAC/ GESAMTGEWICHT

3500 Kg



MOBA MULTI PURPOSE CONTROLS - 3
MOVEMENT AT THE SAME TIME



INSTALLATION ON NISSAN CABSTAR WB 3400 MM

SAFIS.r.l.

Sede legale: Via San Rocco, 8 - 31041 Cornuda (TV) - Italy / Sede operativa: Via L. Da Vinci, 3 - 35048 Stanghella (PD) - Italy

Tel.: +39 0425 95792 - Fax: +39 0425 958602 commerciale@safiaerialplatforms.com www.safiaerialplatforms.com